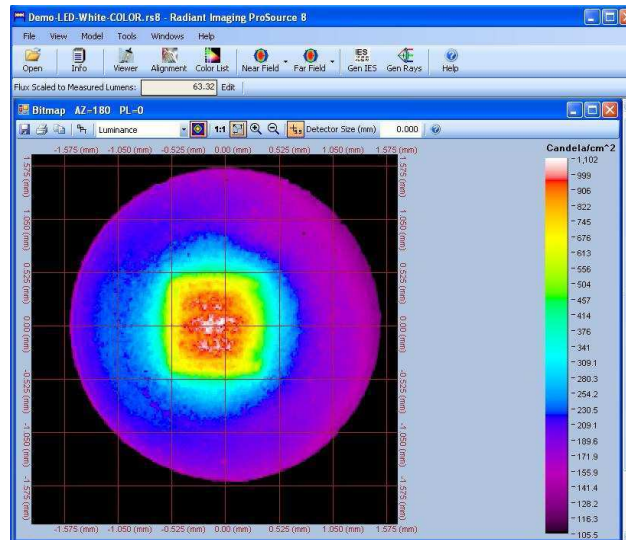


ProSource Software Version 9.0

Software for light source analysis and ray generation using Radiant Source Model data files



ProSource software enables illumination designers to fully exploit Radiant Source Models. These models are the most accurate method of describing the near-field output of real light sources in optical and illumination design software. ProSource software can be used to perform a variety of analyses on Radiant Source Models, as well as to generate ray sets that can be exported to leading optical and illumination design software programs, such as ASAP, LightTools, TracePro, ZEMAX, SimuLux and FRED*. Version 9.0 includes spectral ray generation – using measured or a user defined spectra, color rendering index for both integrated and angle calculations, and support of illuminance on a plane.

For technical or sales support contact us as sales@radiantimaging.com or call us at (425) 844-0152.

ProSource 9 – New Features

- Spectral ray generation – Generates spectral rays from a measured or a user defined spectra
- Color Rendering Index calculations; both integrated and by angle
- Illuminance on a plane now supported



Radiant Imaging, Inc. • 22908 NE Alder Crest Drive, Suite 100 • Redmond, WA 98053 • USA
 +1 (425) 844-0152 • FAX +1 (425) 844-0153
sales@radiantimaging.com • www.radiantimaging.com

Capabilities

Ray Generation

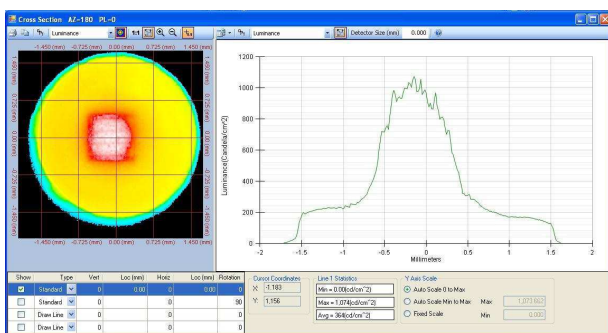
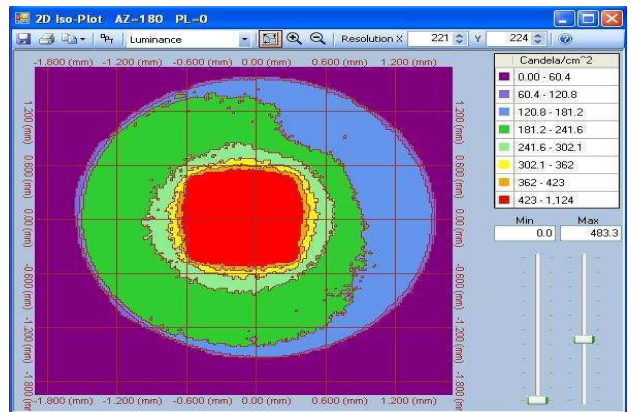
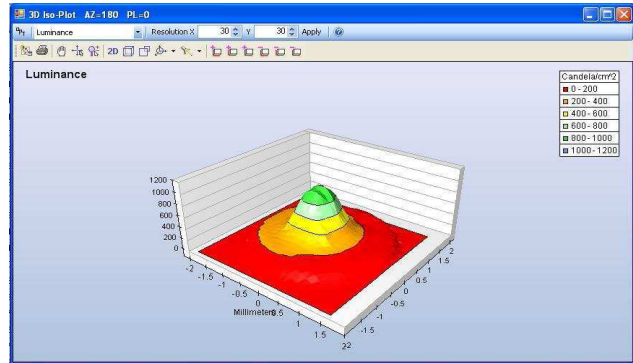
- Exported ray sets are compatible with ASAP, FRED, Integra, LightTools, LucidShape, Opticad, OSLO, SimuLux, TracePro, Zemax, general unix binary format and ASCII format among others.*
- Full user control over the number of rays, angular range of rays, total luminous flux of the ray set and ray origin
- Generate rays on the surface of a sphere, cylinder, or plane as well as nearest distance to z-axis location.
- Photopic, color (RGB) and spectral raysets* supported with no limit to the number of rays generated (other than user disk space)

Analysis

- Determine CIE color coordinates, (CIE xy or CIE u'v'), tristimulus values, correlated color temperature (CCT) and luminance values for any point or user defined area in the source.
- View animated images of light source to intuitively understand its light output characteristics.
- View alignment images of the light source to determine the origin of the global coordinate system in relationship to specific physical features of a light source.
- View 2-D and 3-D data plats of the light source output.
- Exports to Type-C IES and EULUMDAT files for general lighting applications

Minimum System Requirements

- Intel Pentium Processor 1 GHz or better
- 256 MB Ram
- 1GB free space on hard drive
- Win 2000, Win XP, Vista, or 7 (32 and 64 bit)



Prices

ProSource 9	\$ 995
Upgrade PS8 to PS9	\$ 450
Data file Photopic	\$ 225
Data file Color	\$ 350
RSM Library	\$ 3,495
RSM Scan**Contact Sales@Radiantimaging.com	

*Spectral Ray Sets compatible with Zemax and LightTools among others. Check with Optical Design manufactures for required format



Radiant Imaging, Inc. • 22908 NE Alder Crest Drive, Suite 100•Redmond,, WA 98053• USA
 +1 (425) 844-0152 • FAX +1 (425) 844-0153
 sales@radiantimaging.com • www.radiantimaging.com